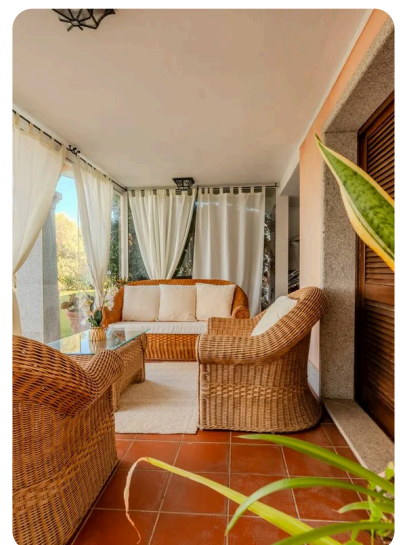
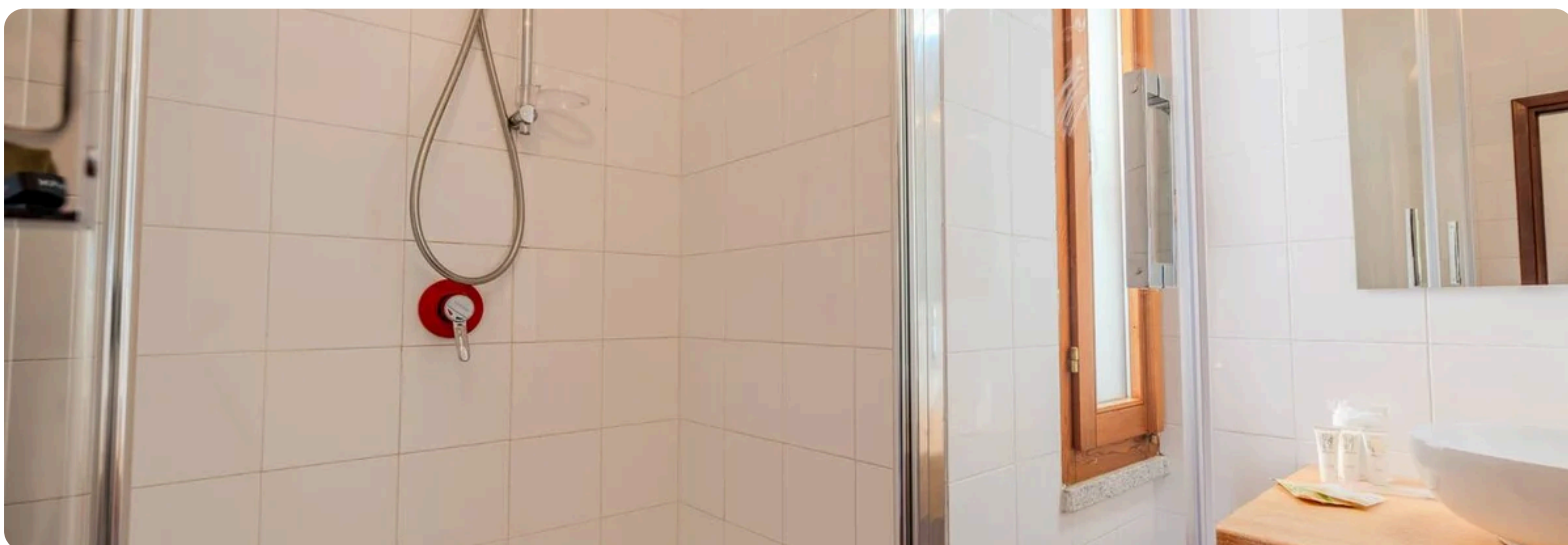
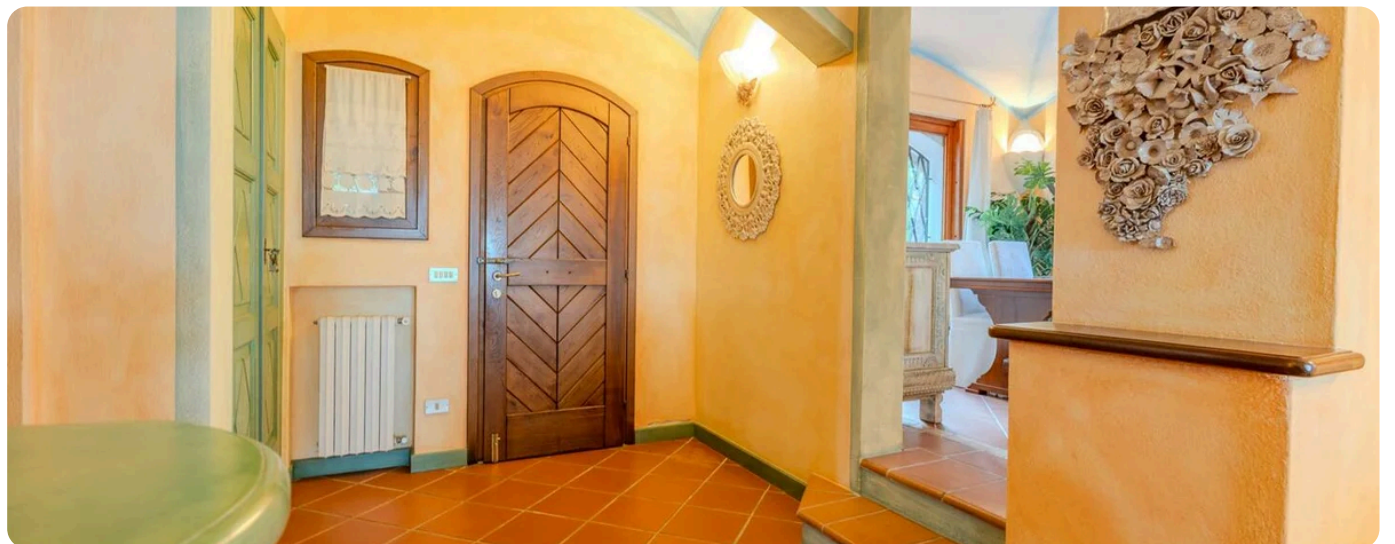
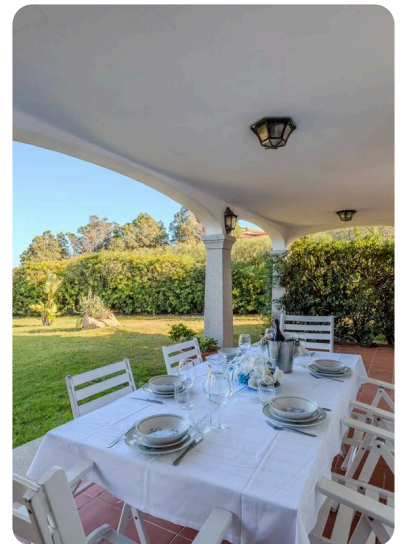




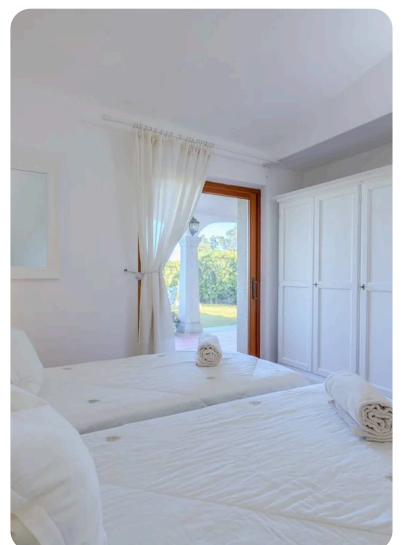
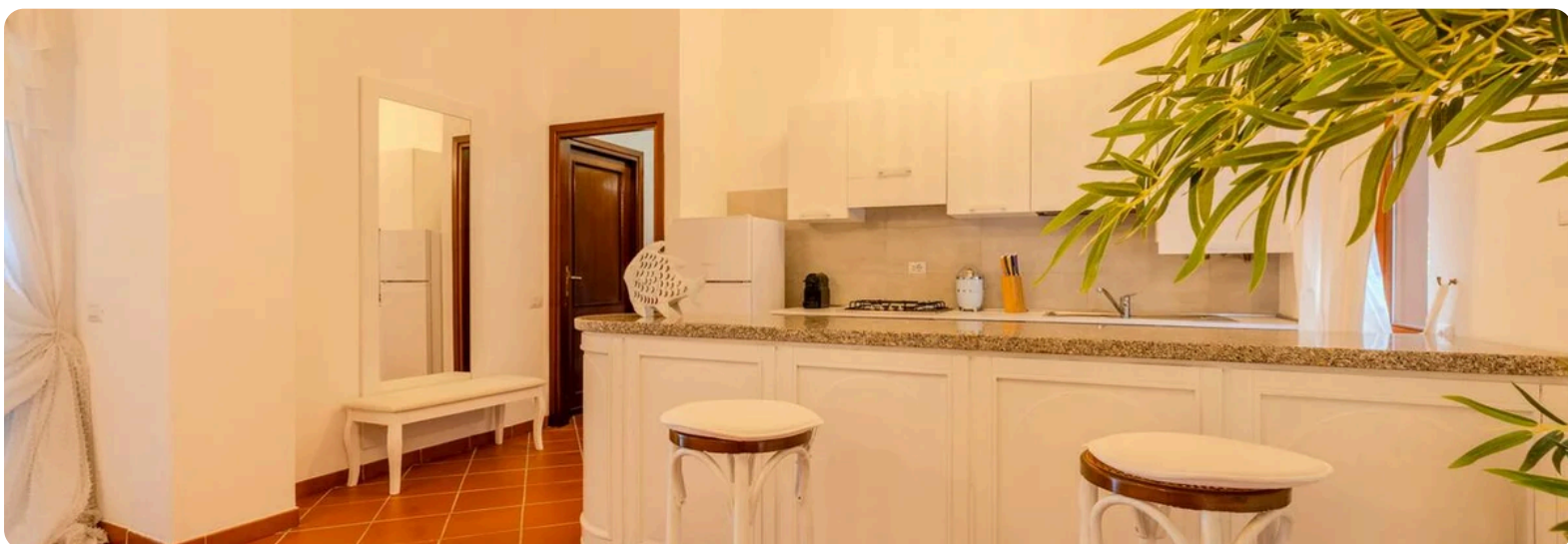
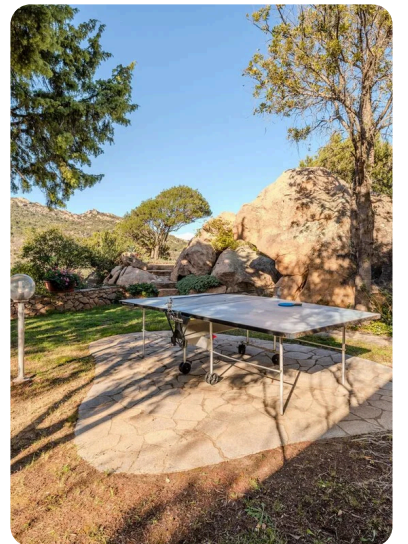
Villa Esma

Sardinia, Italy

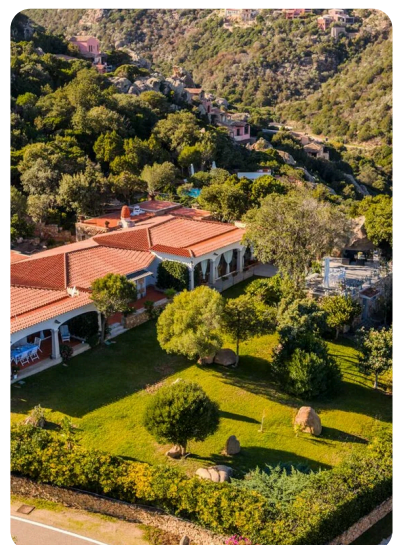
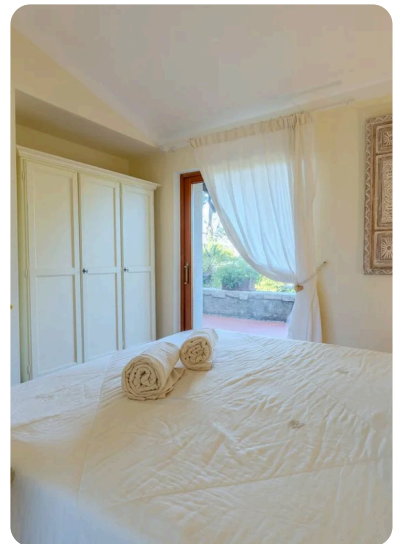
Gallery



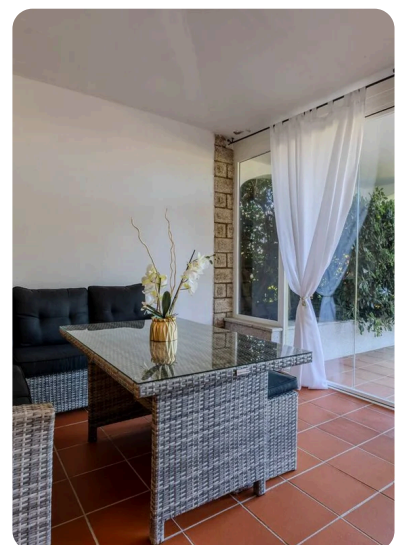
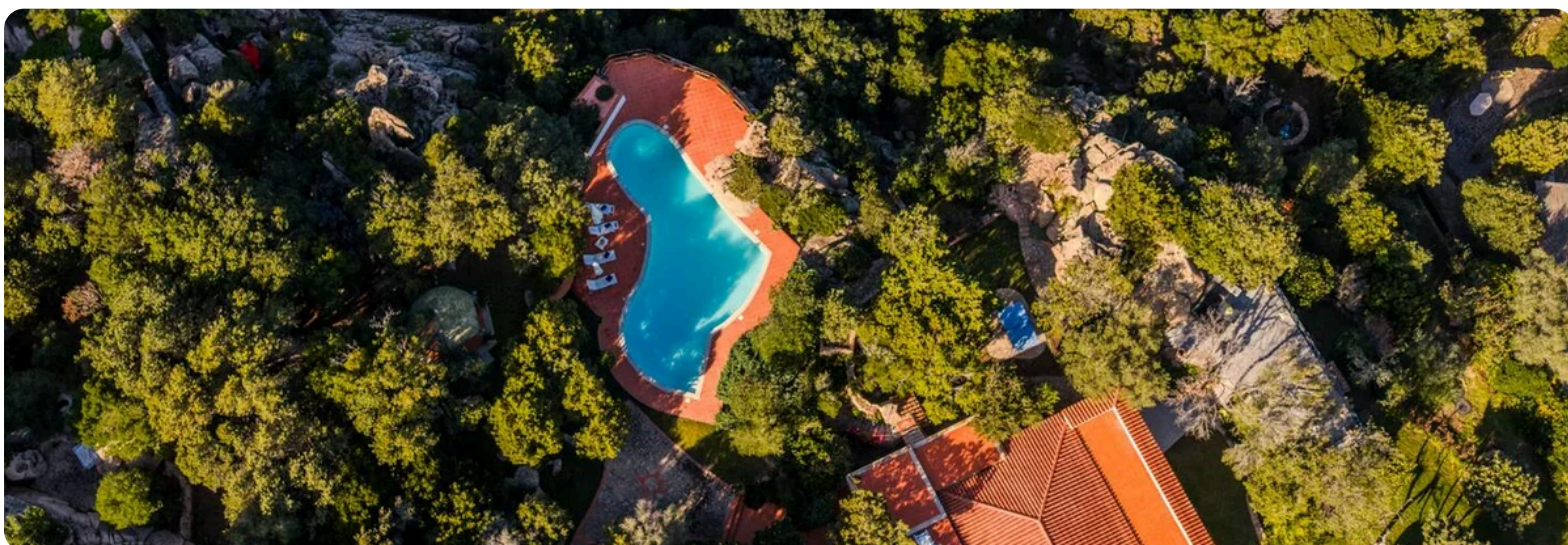
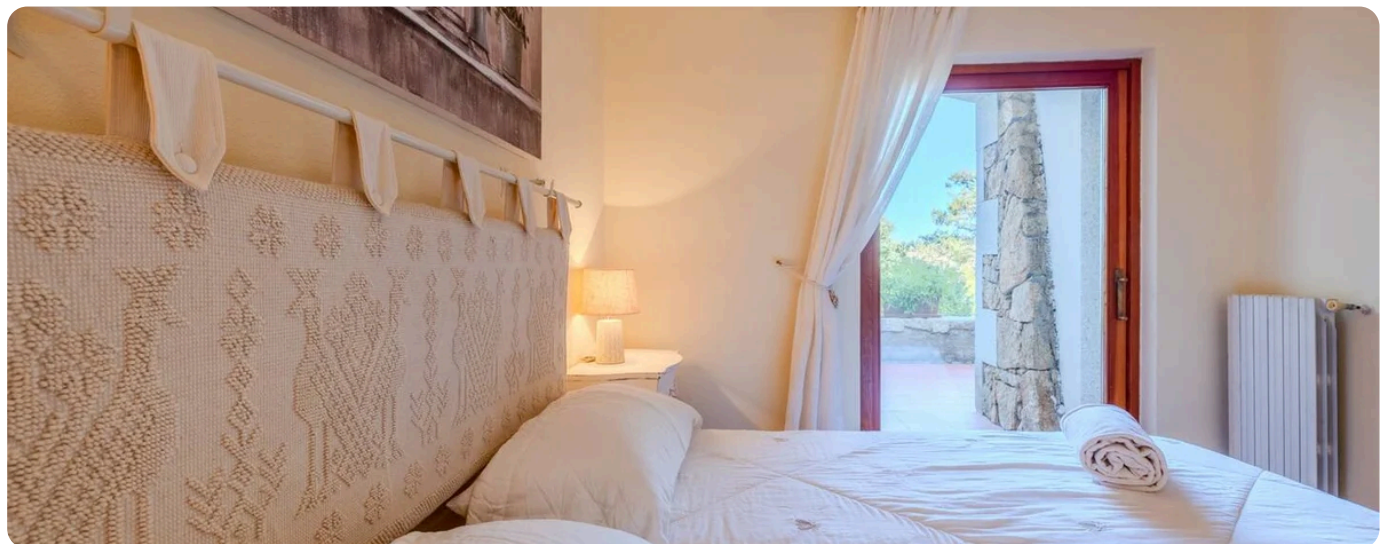
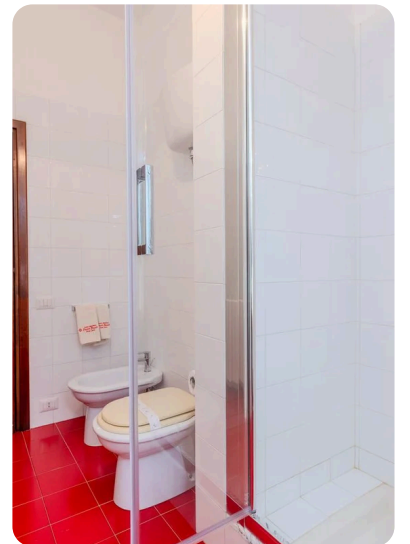
Gallery



Gallery



Gallery



Gallery



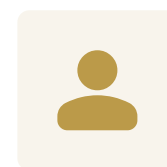


Description

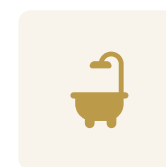
Villa EsmA is an exclusive luxury residence located in Pantogia, one of the most prestigious and panoramic areas of Porto Cervo, in the heart of the Costa Smeralda. Designed for a discerning international clientele, the villa combines elegant architecture, absolute privacy, and high-end services, offering a refined living experience just minutes from the region's most iconic beaches and the authentic Mediterranean lifestyle.

The property extends over more than 400 sqm of interior living space and approximately 7,000 sqm of outdoor areas, immersed in Mediterranean vegetation and surrounded by characteristic granite rocks. The villa has been designed to ensure maximum comfort and a seamless connection between indoor and outdoor living, enhancing natural light and panoramic views over the Gulf of Pevero, with vistas stretching to Grande Pevero Beach and Piccolo Pevero.

Villa EsmA features 7 bedrooms and 7 bathrooms, comfortably accommodating up to 15 guests. ...



Guests
15



Bathrooms
7



Bedrooms
7



Bedrooms (7)



Queen Bed
1 · 2 Guests



Queen Bed
1 · 2 Guests



Double Bed
1 · 2 Guests



Double Bed
1 · 2 Guests



Single Beds
2 · 2 Guests

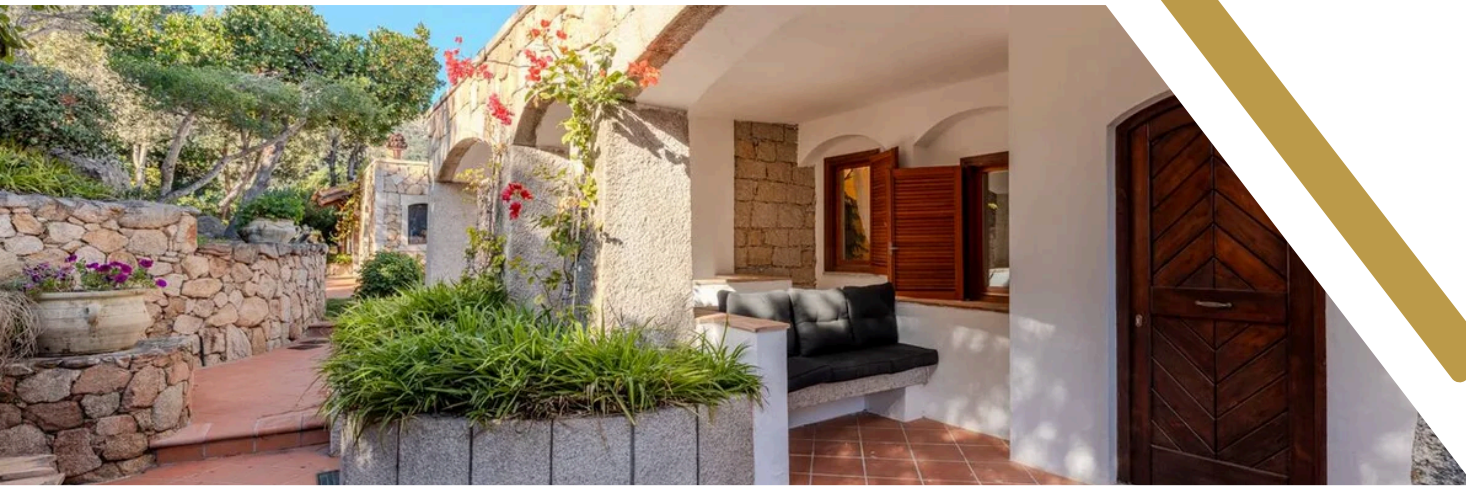


Single Beds
2 · 2 Guests



Double Bed & Single Bed
2 · 3 Guests





Amenities

Villa Esma

Villa Esma Location

Location:

Sardinia, Italy

Nearby Attractions:

Located in the beautiful Sardinia, Italy area, surrounded by stunning beaches and local attractions.

